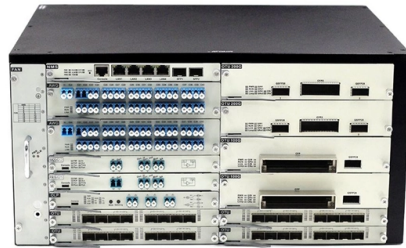


2 LEDs on the switch s optical port



Overview

A single tricolor LED for each SFP-DD indicates the port status. System is operating normally without alarms. The following table describes. The port side of the switch has the following LEDs. The port status LEDs for the FC ports are arranged left and. Switches have LEDs for indicating power status, port status, link status, error indication, troubleshooting and performance monitoring. The following describes the purpose of the LED indicators, and the meaning of their colors: System LED - Shows whether the system is receiving power and is functioning. When you know how to read status LEDs, you can confirm connections at a glance, spot speed mismatches before they slow you down, and zero in on a bad cable without opening a single network utility. This guide unpacks what Ethernet port LEDs mean, how vendors map colors and blink rates, and how to.

Article Content

Quick question about Ethernet ports.

There are two LEDs on an Ethernet port: one indicates link (and often connection speed), the other activity. It's a small bit of microprocessor logic to detect the link (and relevant speed) and

What Are Optical Switches and How Do They Work?

Core Function and Definition An optical switch is a device engineered to selectively redirect incoming optical signals from one fiber-optic input port to a chosen output port. Its primary

Interpreting LED activity

The status LEDs can display solid amber or flash during boot, POST, or other diagnostic tests. This is normal; it does not indicate a problem unless the LEDs do not indicate a healthy state after all boot

2.1.1.3 Switch LED Indicators

If the LED is green, it indicates the PoE mode is selected and the port LEDs will display colors with different meanings. If the port LED is off, the PoE is off.

Interpreting Port-Side LEDs

When the SFP-DD LED blinks white one time, it shows the status of the first port of the SFP-DD. When it blinks white twice, it shows the status of the second port of the SFP-DD.

Switch LEDs

Each Ethernet port, 1-Gigabit Ethernet module slot, and 10-Gigabit Ethernet module slot has a port LED. These port LEDs, as a group or individually, display information about the switch and about the

Light Reading

Light Reading is the leading source of news analysis for communications industry professionals.

ExtremeSwitching Hardware Installation Guide

ExtremeSwitching X440-G2 Series Switch LEDs The following sections describe the meanings of the LEDs on the ExtremeSwitching X440-G2 series switches.

Ethernet Port Lights Meaning

The Ethernet port lights can confuse a novice and even an experienced user. So I thought it would be pretty good to clear up this

Network Switch Port LED and Status LED Guidelines

This chapter provides a set of guidelines for how network port and status LEDs should appear on the front panel of a network switch. This provides a network operator with a standard way to identify the

Cisco Catalyst 9500 Series Switches Hardware

Each Ethernet port, 1-Gigabit Ethernet module slot, and 10-Gigabit Ethernet module slot has a port LED. These port LEDs, as a group or

Understanding the LEDs

Understanding the LEDs The switch consists of multiple LEDs to monitor switch activity and performance. You can also monitor the status of the fan tray assembly and the power supplies.

Ethernet Port Status LEDs: Meanings, Colors, and Network ...

Ethernet port LEDs are physical feedback from the PHY (the physical layer chip) on your network interface or switch. They indicate whether the device senses an electrical or optical link

View the Optical Module Status on a Switch through the Command

Once the transceiver and fiber optic cable are plugged in properly in the switch optical module, you should be able to view the current information for the optical connection, which helps

Network Port Lights Meaning: Troubleshooting Ethernet LEDs

Tip: Using certified Router-switch hardware ensures LED indicators reliably reflect network status, making troubleshooting faster and maintaining predictable network performance across your

Network Port Lights Meaning: Troubleshooting Ethernet LEDs

For enterprise IT teams and engineers using Router-switch devices, these LEDs are often the first indicator of network health. This guide explains what each light means, how to troubleshoot issues,

Understanding the LEDs

These port LEDs, as a group or individually, display information about the switch and about the individual ports. The port mode determines the type of information shown by the port LEDs. To select

Switch Port LEDs: What Do They TELL Us?

What Do the LED Lights on each physical port of a switch tell us? Is there an emergency? Do we need to be concerned? 1 6 Mistakes Computer Networking Beginners Make That NO Admin or Engineer ...

Interpreting LED activity

System activity and status can be determined through the activity of the LEDs on the switch. There are three possible LED states: no light, a steady light, and a flashing light. Flashing lights may be slow,

Understanding the LEDs

Each Ethernet port, 1-Gigabit Ethernet module slot, and 10-Gigabit Ethernet module slot has a port LED. These port LEDs, as a group or individually, display information about the switch and about the

Optical Switches: Applications and Requirements

Explore the applications of optical switches in optical path provisioning, protection switching, packet networks, and modulation, focusing on their switching time and port requirements.

Understanding LEDs on Network Switches

The LEDs for port 2 and 3 are solid green, as these represent the member numbers of other stack members. The other port LEDs are off because there are no more members in the stack.

Interpreting port-side LEDs

Sometimes, the LEDs may flash either of the colors during boot, POST, or other diagnostic tests. This is normal; it only indicates a problem if the LEDs indicate an unhealthy state after all boot processes

What do the LED Indicators on my switch mean? | D-Link UK

The first LED is for the top port and the second one is for the bottom ports. A solid light denotes a valid link on the port while a blinking light indicates activity on the port.

Interpreting LED activity

System activity and status can be determined through the activity of

How To View Port Status And Optical Module Information On

This document uses the Moduletek SFP-10G-LR-BIDI optical module installed on an Extreme X690-48x-2q-4c switch as an example to demonstrate how to view port status and optical

Contact Us

For more information, pricing, or custom solutions, please contact us:

Website: <https://truhope.co.za>

Email: sales@truhope.co.za

Phone: +27 64 987 3021

Address: 22 Loop Street, Cape Town, 8001, South Africa

This document is for informational purposes only. Specifications subject to change without notice.

