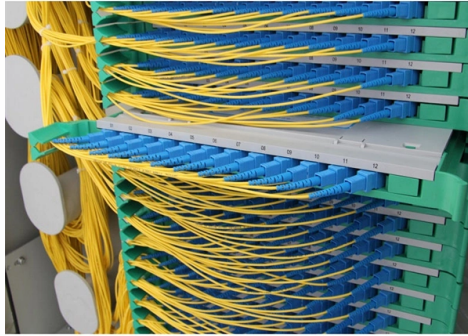


# Controlling PoE Switch



## Overview

This 2025 guide explains how to enable, verify, and optimize PoE on Cisco switches, including standards, power budgeting, configuration commands, troubleshooting steps, and security recommendations. Before enabling PoE, it's important to understand what each standard. A PoE switch is a network switch that utilizes PoE technology to transmit power and data over the same Ethernet cable to powered devices such as IP cameras, wireless access points, and VoIP phones, simplifying installation and reducing maintenance costs. This simplifies installation and management of equipment like IP cameras and VoIP phones, eliminating the need for separate power adapters. You may also want to. This step-by-step guide explains how to configure Ubiquiti switch devices, adopt them into UniFi Controller, create VLANs, enable PoE per port, and monitor live traffic and power consumption effectively. powered device can receive redundant power when it is connected to a PoE switch port and to an AC power source. It allows you to turn PoE ports on, off, and power cycles them.

## Article Content

### Power over Ethernet (PoE) User Guide for EX Series Switches

Use this guide to configure the Power over Ethernet (also known as PoE) feature in Junos OS. PoE permits electric power, along with data, to be passed over a copper Ethernet LAN cable. Powered

### PoE Switches to Simplify Your Power and Network Setup

Streamline your network with NETGEAR PoE switches that deliver power and data over one cable. Choose from managed and unmanaged switches for any setup. Shop now.

### What is a PoE Switch

A Power over Ethernet switch is a network switch that has PoE functionality integrated. Learn about different variations, limitations and benefits

### Cisco Products: Networking, Security, Data Center

Explore Cisco's comprehensive range of products, including networking, security, collaboration, and data center technologies

### How to Power Your Devices with PoE: A Guide to Injectors, Switches

This guide explores the core components that make PoE possible, including injectors, switches and splitters. You'll learn how each one works, when to use them and how to choose the

### Ubiquiti UniFi Switch Pro XG 8 PoE 10G Layer-3 Switch mit PoE++

Ubiquiti UniFi Switch Pro XG 8 PoE 10G Layer-3 Switch mit PoE++ Netzwerk-Switches von UBIQUITI - Schnelle Lieferung günstige Preise Für Gewerbe und Privat Jetzt online bei reichelt elektronik bestellen!

### A Comprehensive guide to PoE Switches and their Uses

PoE switches enable remote monitoring, control, and management of connected devices from a single location, improving network reliability and efficiency. This

### Configuring the PoE Controller on EX Series Switches | Junos OS ...

On EX6200 and EX8200 switches, each line card that supports PoE has its own PoE controller, so PoE controller options are configured separately for each line card. In addition, each

### Interface and Hardware Configuration Guide, Cisco IOS Release 15.2

Use the debug ilpower controller privileged EXEC command to enable debugging of the platform-specific Power over Ethernet (PoE) software module on the switch in long message format.

Configuring PoE | FortiSwitch 7.0.8 | Fortinet Document Library

Enabling PoE on the port config switch-controller managed-switch edit <FortiSwitch\_serial\_number>

A python script to control the state of PoE ports on unifi

This is a small command-line tool to control the state of Power over Ethernet (PoE) ports on Ubiquiti Networks switches being controlled by a Unifi controller.

How to Enable PoE on Cisco Switch | Standards

This 2025 guide explains how to enable, verify, and optimize PoE on Cisco switches, including standards, power budgeting, configuration commands,

What is a poe switch and how to select it?

A Power over Ethernet switch is a network switch that has PoE functionality integrated. Learn about different types, benefits and applications of

What is a PoE switch (Power over Ethernet switch)?

A PoE switch provides power and network connectivity over Ethernet cables to access points, security cameras, and other Internet of Things

Power Over Ethernet (PoE) Switches - D-Link

Power Over Ethernet (PoE) Switches Power Over Ethernet (PoE) Switches Simplify and empower your network infrastructure with D-Link's Power over Ethernet

What is a PoE Switch? [Comprehensive Guide]

A PoE switch delivers power and data over Ethernet, simplifying network setups and reducing costs for devices like IP cameras, phones, and

How to Use Poe Switch for IP Cameras A Complete Guide

In this guide, we'll explore how to use a PoE switch for IP cameras, covering everything from selecting the right equipment to troubleshooting common

Monitoring and Troubleshooting PoE | Junos OS | Juniper Networks

You can monitor Power over Ethernet (PoE) power consumption, both for the switch as a whole and for individual PoE interfaces.

Configuring Power over Ethernet

To configure the overall PoE budget of DIN rail switches, use the global configuration command `power inline wattage maxmax-wattage`. Limiting the PoE budget prevents overdrawing power and

New UniFi Dream Machine BEAST, FG Core, 100GbE Tech and MASSIVE PoE ...

The devices observed represent a noticeable increase in port density, throughput capability, and overall positioning compared to the current UniFi lineup. Four specific devices stand

The Ultimate Guide to Power Over Ethernet Switches:

Discover everything you need to know about PoE switches in our ultimate guide. Learn how Power over Ethernet simplifies network deployment

How to Configure Ubiquiti Switch in UniFi Controller

Learn how to configure Ubiquiti switch in UniFi Controller: adopt the switch, create VLANs, set PoE, and monitor traffic with step-by-step instructions.

How To Configure PoE On A Network Switch?

Configuring PoE (Power over Ethernet) on a network switch enables you to deliver power and data simultaneously to compatible devices. This simplifies installation and management of

Configuring PoE | FortiSwitch 7.4.4 | Fortinet Document Library

For the other FortiSwitch PoE models, PoE pre-standard detection is set on each port. On the global level, set poe-pre-standard-detection with the following commands: config switch-controller managed

ExtremeSwitching 200 Series: Command Reference Guide

This section describes the commands used to configure and monitor PoE (Power over Ethernet). PoE allows IP telephones, wireless LAN access points, and other appliances to receive power as well as

Ubiquiti UniFi Switch Lite 16 PoE

Der USW-Lite-16-PoE ist ein konfigurierbarer Gigabit Layer 2 Switch mit sechzehn Gigabit Ethernet Ports, darunter acht Auto-Sensing 802.3at PoE+ Ports und

Installing and Troubleshooting Power over Ethernet (PoE)

This is typically a PoE-enabled network switch but can also be a midspan injector used in instances where the switch is not capable of supplying power. Twisted

Industrial Ethernet Switches

Provides an overview of deploying PoE in an industrial environment, exploring how this sector can benefit from PoE technology and describing the

## Contact Us

For more information, pricing, or custom solutions, please contact us:

Website: <https://truhope.co.za>

Email: [sales@truhope.co.za](mailto:sales@truhope.co.za)

Phone: +27 64 987 3021

Address: 22 Loop Street, Cape Town, 8001, South Africa

This document is for informational purposes only. Specifications subject to change without notice.

