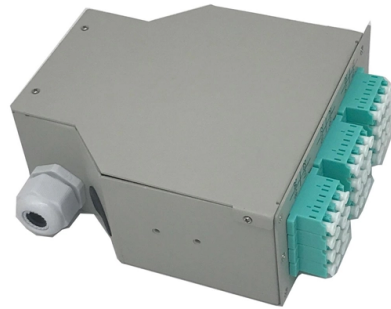


How many IPs does a beam splitter have



Overview

Beam splitters are sometimes used to recombine beams of light, as in a Mach-Zehnder interferometer. In this case there are two incoming beams, and potentially two outgoing beams. But the amplitudes of the two outgoing beams are the sums of the (complex) amplitudes calculated from each of the incoming beams, and it may result that one of the two outgoing beams has amplitude zero. OverviewA beam splitter or beamsplitter is an that splits a beam of into a transmitted and a reflected beam. It is a crucial part of many optical experimental and measurement systems, such as In its most common form, a cube, a beam splitter is made from two triangular glass which are glued together at their base using polyester,, or urethane-based adhesives. (Before these synthetic. For beam splitters with two incoming beams, using a classical, lossless beam splitter with E_a and E_b each incident at one of the inputs, the two output fields E_c and E_d are linearly related to the inputs thro.

Article Content

How Do Polarizing Beam Splitters Work?

How Polarizing Beam Splitter Works There are several types of beam splitters for many various applications in the world today, but this short read will concern

Optical Beam Splitters

Nonpolarizing beam splitters are often available in just 33 and 50% T/R ratios, but Keysight's comprehensive selection offers eight different ratios, from 4 to 80%.

What Are Optical Beam Splitters?

What Are Optical Beam Splitters? Key Takeaways Beam splitters, essential for applications such as teleprompters and holograms, have different types that

Beam splitter | Description, Example & Application

A beam splitter is an optical device that splits a single beam of light into two or more beams. It is commonly used in scientific and industrial applications.

What Is a Beam Splitter and How Does It Work?

A beam splitter is an optical instrument that divides an incoming light beam into two or more separate beams. This passive device uses a specialized surface designed to both reflect and

Beam Splitters - optical power splitter, beamsplitter, thin-film ...

A beam splitter (or beamsplitter, power splitter) is an optical device which can split an incident light beam (e.g. a laser beam) into two (or sometimes more) beams, which may or may not have the same

Beam Splitter | Precision, Applications & Design Principles

Understanding Beam Splitters: Precision, Applications, and Design Principles Beam splitters are integral optical components that divide a beam of

Covering the Basics of Beamsplitters — Firebird Optics

Beamsplitters are usually made as a reflective device that splits the beam into exactly 50/50 with half of the beam being transmitted and the other

What is a Beam Splitter: Types And Applications

A beam splitter is a device used to separate or combine light. It is widely used in guiding light in optical systems, enhancing imaging and

Understanding Beamsplitters: Types, Principles, and

The assembly works by splitting the incoming light into one to two beams, one or more of which are transmitted through the optical element and

What are Beamsplitters?

Beamsplitters are optical components used to split incident light at a designated ratio into two separate beams. Additionally, beamsplitters can be used in

Beam Splitting Plate: Function, 45° Design & Optical

Learn how beam splitting plates (flat beam splitters) work, why they use a 45° incidence angle, and their critical role in laser systems, interferometry, and

A Brief Guide to Beamsplitters

Beamsplitters—also referred to as beam splitters or power splitters—are optical devices designed to split incident light into two or more separate beams. They

Beam Splitter

6.4.3 Beam splitters and mirrors The beam splitter is a device for dividing an incident beam into two beams in two different directions. In an achromatic beam splitter, both beams have identical SPD. In

Beam Splitters: Explained

Beam splitters are a fundamental element in optical systems. Beam splitters are, in essence, optical components used to divide a single light source

Beamsplitters: A Guide for Designers | Optics

A beamsplitter is an optical device used to divide a beam of light into two or more separate beams, typically by reflecting a portion of the incident light while

Optical Splitters in Modern Networks

The 2x64 splitter splits two incident light beams from two individual input fiber cables into sixty-four light beams, transmitting them through sixty-four

How to Select a Beamsplitter

What is a Beamsplitter? A beamsplitter is an optical device that divides an incident beam of light into two parts: one part is transmitted through the splitter, while the

Photonics 101

Usually, a non-polarizing beam splitter will split the beam on a 50/50 ratio while a polarizing beam splitter tends to lean towards a 95/5 ratio. Other than the cube beam splitter, there is

Understanding Beamsplitters: Types, Principles, and

They eradicate the ghosting phenomenon because the transmitted beam is consistent with the incident light beam. A cube beam splitter has a

Optical Beamsplitters

Our plate beamsplitters have a coated front surface that determines the beam splitting ratio while the back surface is wedged and AR coated in order to

How Does a Beamsplitter Work? | Laser Focus World

A cube beam splitter has a significant advantage over a plate beamsplitter because ghost images are not produced by the former. Furthermore, cubes allow users

How does a beam splitter work? Common types and use cases

Understanding Beam Splitters Beam splitters are essential optical components used to divide a beam of light into two or more separate beams. They play a crucial role in various scientific,

Your Go-to Guide to Optical Splitter

The optical splitter is an optical power distribution device that splits one optical signal into multiple optical fiber signals to achieve multichannel transmission.

High Power Beam Splitters with Dielectric Coatings

Beam splitters are used for separation of one wavelength into two beams with different or same energy. This can be done by beam splitter cubes or for highest power densities with dielectric coted beam

What is a Beam Splitter?

A beam splitter or power splitter is an optical device that can split an incident light beam e.g. a laser beam into two or sometimes more beams, which may or may not have the same optical

Beamsplitters: A Guide for Designers | Optics

Cube beamsplitters Cube beamsplitters have several advantages over plate beamsplitters and are widely used for a variety of reasons. These are rugged

Beamsplitter Guide

The beams exiting a beamsplitter have the same wavelength as the incident light. This distinguishes beamsplitters from dichroic mirrors and hot and cold mirrors, which split an input beam

Understanding Beamsplitters: A Comprehensive Guide

Beamsplitters are optical components used to split an incoming light beam into two independent beams. Depending on the application, they can also combine two

Contact Us

For more information, pricing, or custom solutions, please contact us:

Website: <https://truhope.co.za>

Email: sales@truhope.co.za

Phone: +27 64 987 3021

Address: 22 Loop Street, Cape Town, 8001, South Africa

This document is for informational purposes only. Specifications subject to change without notice.

