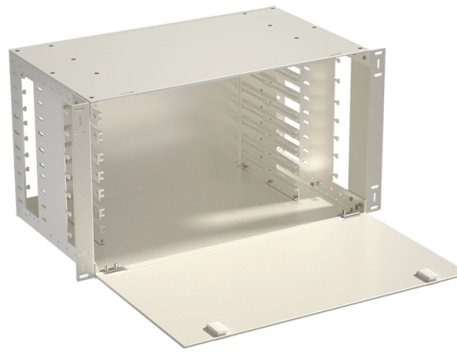


How to check the circuits in a high-voltage power distribution box



Overview

Verify the mechanical lock rack's in/out functioning using the handle for easy movement of the breaker. Verify VCB test position, service position control circuit, and legends. Check breaker rating sticker and serial number against approved drawing. The electrical panel test in any power system is performed to ensure that the panel construction, connection, and performance are correct from an operational, reliability, and safety standpoint; thus, to make sure the continuity of electrical operation, a complete panel test is performed in the. During the debugging of high-voltage power distribution cabinets, voltage and dielectric loss show an inverse relationship. Insufficient detection accuracy and large voltage errors will lead to increased dielectric loss, higher resistance, and leakage. 6kV to 550kV, encompassing high-voltage circuit breakers, disconnectors. This article provides a comprehensive guide covering everything from the basics of high voltage systems to advanced testing methodologies, integrated data analytics, and future trends in the industry. High voltage systems form the spine of power grids by transmitting large amounts of energy over. In this article, we will primarily focus on the most common and the most problematic breakdowns in a typical power distribution substation and measures to troubleshoot them. Preventive maintenance is an equally important aspect that helps to minimize the possibility of breakdowns or troubles. Understanding its operation and fault diagnosis is essential for maintaining power system reliability and safety. This comprehensive guide delves into the intricacies of high.

Article Content

How to Use a Breadboard

Many electronics projects use something called a breadboard. What is a breadboard, and how do you use it? This tutorial video will give you a basic introduction to breadboards and explain how to use

Electrical Panel Inspection Checklist

Use our electrical panel inspection checklist to identify potential issues, ensure routine maintenance, and prevent costly failures of electrical systems. Preventive maintenance for electrical

✂ Boost Your Electrical Knowledge - 10 Basic Questions ...

Answer: Changes voltage levels (up or down) in AC circuits. Essential for power distribution. 7□ Difference between a conductor and an insulator?

Power Distribution Box, 110V Electricity Meter Electrical

60A HIGH CURRENT POWER SUPPLY BOX: The input voltage of the power box is 110V, and Maximum tolerable load current 60A. Equipped with a multifunctional

Miniature Circuit Breaker [MCB]: What is it?

What is MCB? A Miniature Circuit Breaker (MCB) is an automatically operated electrical switch used to protect low voltage electrical circuits from

Siemens home | Siemens

Siemens: A global technology leader driving innovation in industry, infrastructure and mobility through digital transformation.

Learn how to troubleshoot the operation of distribution ...

In this article, we will primarily focus on the most common and the most problematic breakdowns in a typical power distribution substation and measures to troubleshoot them.

Adjustment Test Operation and Precautions of High

Learn debugging key points, precautions (pre-test checks, etc.), and procedures for high-voltage cabinets to ensure power system stability.

electrical distribution box preventive maintenance check list

Test the grounding system for continuity and resistance. Measure voltage levels at various points in the box. Perform insulation resistance testing on conductors. Check the operation of all circuit breakers

Your Request Couldn't be Processed

There was a problem with this request. We're working on getting it fixed as soon as we can.

Tricks of the Trade: Troubleshooting Industrial Control Cabinets

When troubleshooting drives or AC devices, quickly verify the status of all fuses or circuit breakers by testing the voltage to ground for the input and output terminals, both of which should

AshwinD24's gists · GitHub

GitHub Gist: star and fork AshwinD24's gists by creating an account on GitHub.

Resistor

Various resistor types of different shapes and sizes A resistor is a passive two-terminal electronic component that implements electrical resistance as a circuit

Atlantic International University

Hier sollte eine Beschreibung angezeigt werden, diese Seite lässt dies jedoch nicht zu.

How to Master High-Voltage Switchgear: Operations & Faults

In daily power operations, proper handling and troubleshooting of high-voltage switchgear are paramount. This guide will provide comprehensive insights into safe operating procedures and

Earth-leakage circuit breaker

An earth-leakage circuit breaker (ELCB) is a safety device used in electrical installations to prevent shock. It consists of either a current sensing mechanism,

Wiley Online Library | Scientific research articles, journals, books ...

Hier sollte eine Beschreibung angezeigt werden, diese Seite lässt dies jedoch nicht zu.

Adjustment Test Operation and Precautions of High-Voltage Power ...

Learn debugging key points, precautions (pre-test checks, etc.), and procedures for high-voltage cabinets to ensure power system stability.

unsupervised_topic_modeling/topics/en/17/100/100/topics at ...

Contribute to annontopicmodel/unsupervised_topic_modeling development by creating an account on GitHub.

Wisc-Online Learning Objects | WisTech Open

Wisc-Online, started by Fox Valley Technical College, is a nonprofit platform providing free, high-quality learning objects to learners worldwide. Since 1999, it

Logic Gates | Buy Basic Logic Gates Circuits

Logic gates are integrated circuits that implement a Boolean function, performing logical operations on one or more binary inputs, resulting in a single binary output. Logic gates, a subcategory of logic ICs,

How to Check an Electric Motor: Testing & Troubleshooting

Check the windings for short circuiting to the frame. Most household appliance motors with a shorted winding will not run and will probably open the fuse or trip the circuit breaker instantly (600 volt systems are "ungrounded," so a 600 volt motor with a shorted winding may run and not trip

High Voltage Switchgear

Understanding its operation and fault diagnosis is essential for maintaining power system reliability and safety. This comprehensive guide delves into the intricacies of high voltage switchgear

Testing High Voltage Equipment: A Guide for High Voltage Electricians

Explore expert insights and best practices in high voltage equipment testing for electric power transmission, control, and distribution.

High-voltage direct current

A high-voltage direct current (HVDC) system uses direct current (DC) and high voltages (currently between 100 kV and 800 kV) for electric power transmission.

Electrical Panel Testing Procedure

Learn the fundamental procedures and requirements for electrical panel testing, including as visual inspections, insulation resistance, High Voltage testing, & compliance with NFPA, NEC,

High voltage switchgear

This article will introduce to you what a high voltage switchgear is and how to judge and deal with the faults in a high voltage switchgear.

Contact Us

For more information, pricing, or custom solutions, please contact us:

Website: <https://truhope.co.za>

Email: sales@truhope.co.za

Phone: +27 64 987 3021

Address: 22 Loop Street, Cape Town, 8001, South Africa

This document is for informational purposes only. Specifications subject to change without notice.

